



WORKFORCE TRIPLEX PUMP  
**WORKFORCE™ WF1600LH Triplex Pump**  
WORKFORCE TRIPLEX PUMP



**GLOBAL SOLUTIONS**

DESIGNING, MANUFACTURING AND PACKAGING FOR THE OIL & GAS INDUSTRY

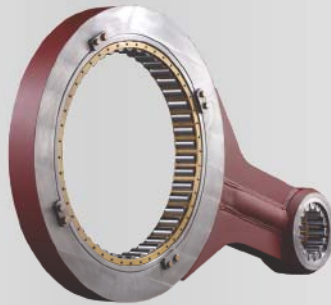
**Beyond Integration**  
**Seamless Solutions™**

# WORKFORCE™ WF1600LH



Double-reinforced, 50 Kip high strength, stress relieved, alloy-steel **Pump Frame** provides rigidity where its needed and longevity where its wanted. Heat treatment after fabrication removes residual stress and prevents distortion after final machining.

Forged, welded and heat treated low alloy steel **Connecting Rods** provide optimal operation integrity under continuous load. Fewer welds allow for enhanced durability.



**Super Bolt & Nut** on Main Bearing cap provide significantly higher yield and tensile strength than the standard hex nut and eliminate the need for special tools not commonly available on drilling rigs.

Premium SKF, Timken or equivalent **Bearings** with minimum L10 life of 30,000 hours at rated load.



Ultra compact, lightweight, harmonically balanced and aligned ground up innovative **Design** results in quiet, low vibration performance, lower operating and transport costs, and industry leading power to weight ratio.



Forged and heat treated, high strength alloy steel ANSI 4340, double helix **Gear** machined to **AGMA 10** & provide longer service life and stronger resistance against chipping under continuous load.



Forged **Pinion** shaft with machined gear made from high strength **ANSI 4340** steel forging for enhanced rigidity and service life.

One piece forged, balanced, and heat treated alloy Steel **Crankshaft** delivers maximum service life. Bolted components allow for easy repairs and optimal sustainability.

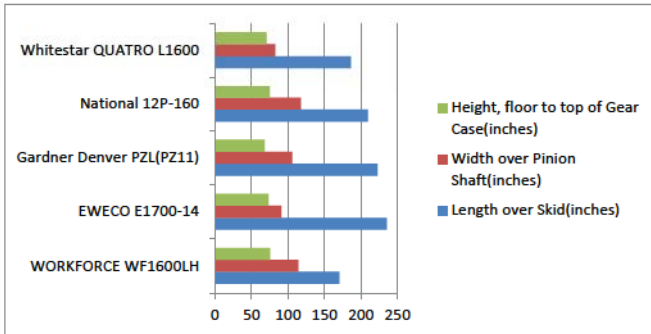


Interchangeable with **Multiple OEM** fluid end modules & components for savings in stocking inventory.

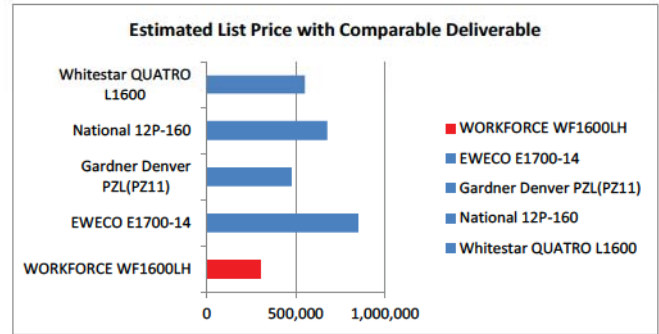


TSC Manufacturing and Supply LLC, 13788 West Road, Suite 100, Houston, Texas 77041, USA  
Tel: +1 832 456 3900 Fax: +1 832 456 3998 Email: sales@t-s-c.com  
Visit our Website at [www.t-s-c.com](http://www.t-s-c.com)

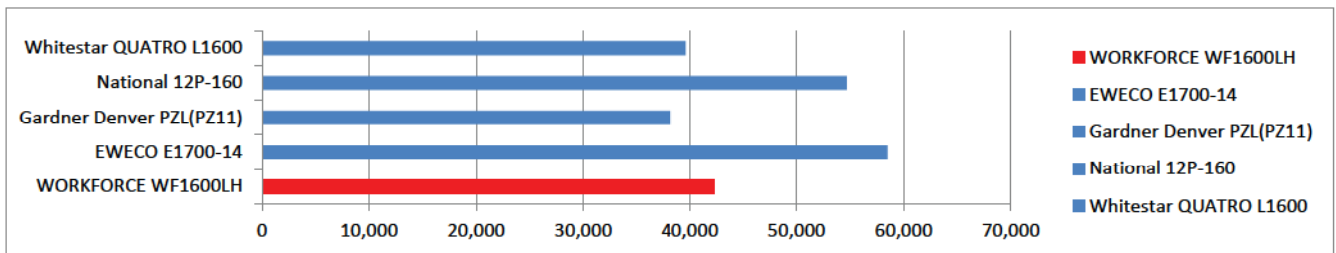
## Why Choose **WORKFORCE™**?



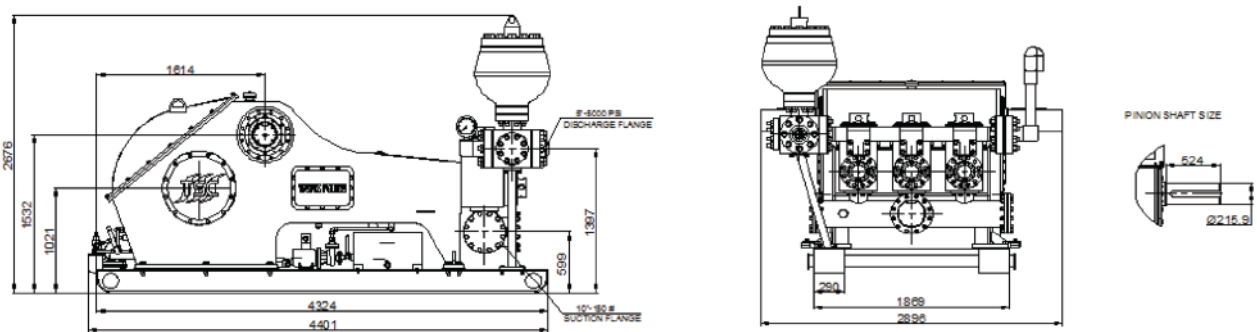
**Smaller Footprint, More Horsepower**



**Lower Cost, Better Value**



**Lighter Weight. More Robust**



## Specifications

Nominal Input Power:	1,600 HP (1,194 kW)
Maximum Continuous Pinion Torque:	15,180 lb-ft
Maximum strokes per minute:	120
Stroke Length:	11 inches (279.4 mm)
Gear Ratio:	4.613 : 1
Maximum Piston Diameter & Pressure:	7 inches @ 3,741 PSI (177.8 mm & 25.8 Mpa)
Minimum Piston Diameter & Pressure:	4.5 inches @ 7,500 PSI (114.3 mm & 52 Mpa)*
Suction Manifold:	10 inches with 150 pound flanges (254 mm)
Discharge Manifold:	5 inches with 10,000 PSI RJ flanges (127 mm & 69 Mpa)
Oil Capacity:	135 gallons (511 liters)
Pump dry weight(including skid):	46,250 lbs (21,000 kg)

\* Pressure ratings limited to fluid end and discharge flange capacity.

## Performance Characteristics

WF1600LH Performance Characteristics		Pinion HP	800	933	1,067	1,200	1,333	1,467	1,600
		Pinion lb-ft	15,180						
		Pinion RPM	277	323	369	415	461	507	554
Liner Dia. (inch)	Max. Pressure (PSI)	Strokes/min	60	70	80	90	100	110	120
4 1/2	7,500	GPM	136	159	182	204	227	250	273
5	7,333		168	196	224	252	280	309	337
5 1/2	6,060		204	238	272	305	339	373	407
6	5,092		242	283	323	364	404	444	485
6 1/2	4,339		284	332	379	427	474	521	569
7	3,741		330	385	440	495	550	605	660

### Notes:

- All data subject to change without notice
- Data is based on 90% mechanical and 100% volumetric efficiency
- Achievable pressure will be limited by input power and fluid end module pressure limitations

## Standard Features

- Small foot print with high horsepower to weight ratio
- Bearings and gearing designed for a minimum L10 life of 30,000 hours at rated load
- Rigid, fabricated oilfield style frame and skid providing stable operating platform
- Fabricated crank shaft with a forged core to minimize vibration and insure longevity
- Cast cross heads and guides to maximize longevity
- Valve over valve, 7500 psi Fluid Ends (PZ10/11, 7500 psi style) as standard

## Options:

- One 20 gallon pulsation dampener with strainer cross
- Pressure relief valve
- Pressure gauge
- Complete electrical lube & liner wash system
- Charge pump
- Custom skids
- Motor starter(s) in explosion proof enclosure
- Dual lubrication pump
- Dual liner wash pump
- Custom drive unitization
- Jib crane

