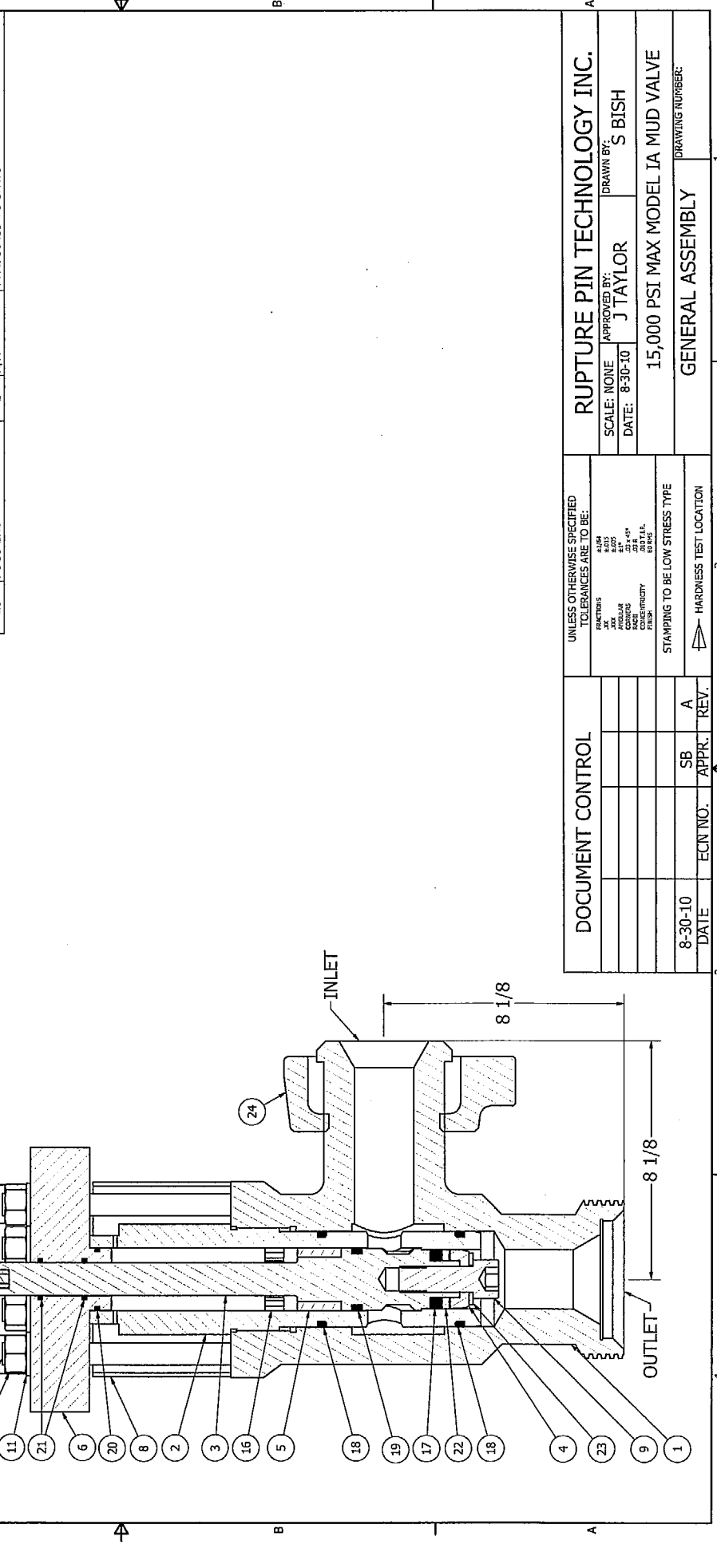


Parts List			
ITEM	DESCRIPTION	QTY	PART NUMBER
1	BODY	1	87-008344
2	SEAT CAGE	1	316SS TO SA479
3	PISTON	1	87-008349
4	SEAL RETAINER	1	17-4SS TO SA564 COND. H1150
5	PISTON BUSHING	1	17-4SS TO SA564 COND. H1150
6	BONNET	1	87-009626
7	TOP PLATE	1	87-008347
8	SLEEVE	1	17-4SS TO SA564 COND. H1150
9	PISTON BOLT	1	87-009337
10	STUD	1	87-009627
11	NORD LOCK WASHER	8	N/A
12	POST	12	N/A
13	SPACER	4	N/A
14	HEX NUT (BONNET, POST)	12	N/A
15	HOLDING NUT	1	87-002311
16	BUMPER	1	N/A
17	MAIN SEAL	1	N/A
18	O-RING (CAGE)	2	N/A
19	O-RING (PISTON)	1	N/A
20	O-RING (BONNET)	2	N/A
21	O-RING (STEM)	2	N/A
22	BACK-UP RING	1	87-009347
23	NORD-LOCK (PISTON)	1	N/A
24	1502 HAMMER NUT	1	N/A
25	RUPTURE PIN	1	1502 HAMMER NUT IN FORGED 4140
26	POCO END	2	N/A



UNLESS OTHERWISE SPECIFIED TOLERANCES ARE TO BE:		<b>RUPTURE PIN TECHNOLOGY INC.</b>	
FINISH	RA 3.2	SCALE: NONE	APPROVED BY: <b>J TAYLOR</b>
AXES	±0.05	DATE: 8-30-10	DRAWN BY: <b>S BISH</b>
HOLES	±0.05	15,000 PSI MAX MODEL IA MUD VALVE	
CHAMFERS	20° ±0.10	GENERAL ASSEMBLY	
CONCENTRICITY	±0.10	DRAWING NUMBER:	
PERF.	±0.10		
STAMPING TO BE LOW STRESS TYPE			
8-30-10	SB	A	
DATE	APPR.	REV.	
	ECN NO.	4	